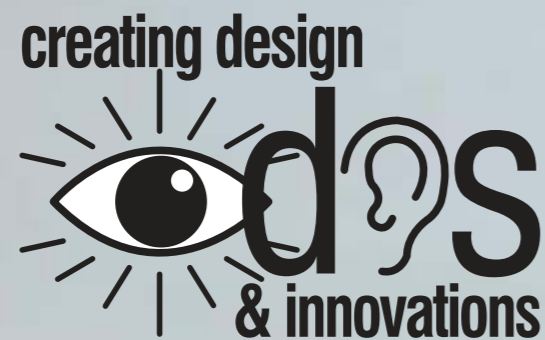


GAME CHANGER



Our vision:

“to be architect-of-choice to deliver hypergreen, signature and innovative architecture and masterplans.”

- © T. R. Hamzah & Yeang Sdn. Bhd. (2023)-

Our Offices

© Malaysia (Flagship Office):

T. R. Hamzah & Yeang Sdn. Bhd.

8, Jalan 1, Taman Sri Ukay
68000 Ampang, Selangor, Malaysia
[t] 03-4257 1966/ 1948
[f] 03-4256 1005
[e] trhy@trhamzahyeang.com
[w] www.trhamzahyeang.com

UK:

Ken Yeang Design International Ltd.

4A Avery Row, London, W1K 4AL
[t] 03-4257 1966/ 1948
[e] trhy@trhamzahyeang.com

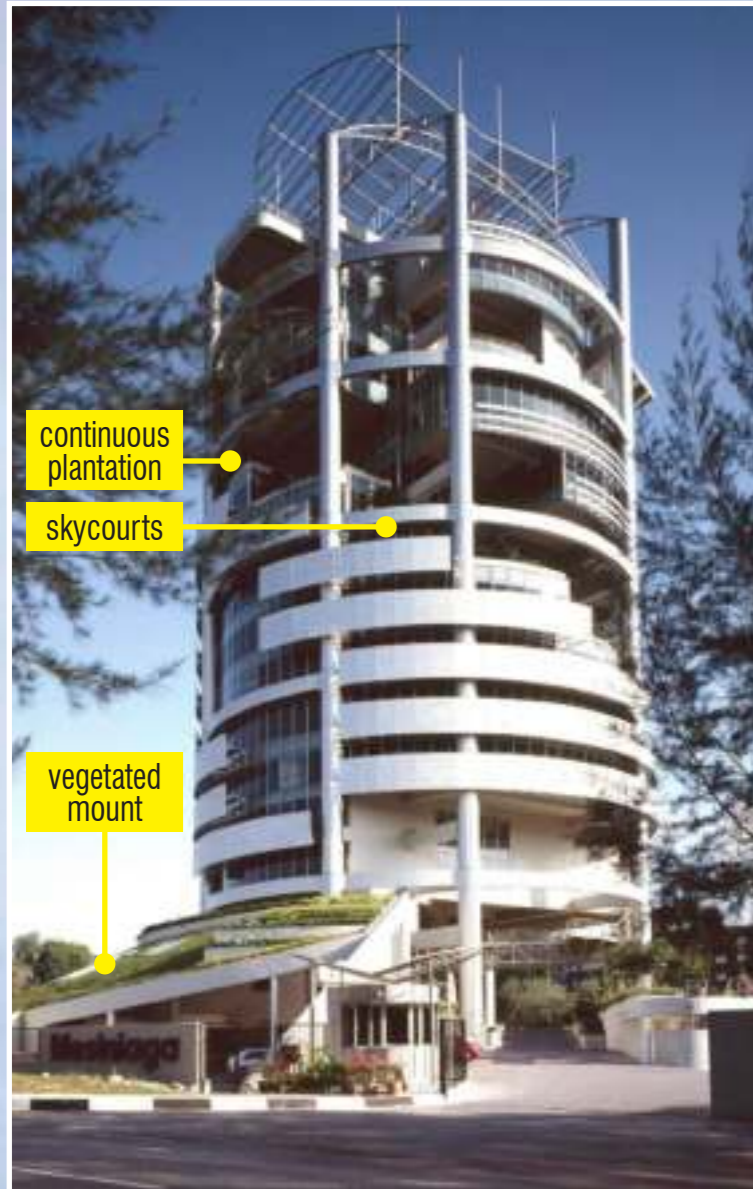
China:

North Hamzah Yeang Architectural
Engineering Design Co. Ltd.
(8 Branches in China)

Guide International Centre B-10F,
Nanbine Road 27 Beijing, 10055, China
[t] 86 10 6342 7165
[e] board@nhydesign.com
(Contact: Y. Z. Song - CEO)

MENARA MESINIAGA

SUBANG



continuous
plantation

skycourts

vegetated
mount

Award Winning Architecture

Menara Mesiniaga is one of our early buildings that launched our work in ecological design as low-energy (bioclimatic) architecture and which received the **Aga Khan Award**. The year was 1992, and the building marked the beginning, both literally as well as figuratively, a new era in our work on deep green design.

Today the firm's work points resolutely towards designing for humanity's sustainable future, while holding steadfast to the time-honored values of architectural excellence.

Our philosophy is founded upon three crucial elements:

- *the pursuit of the best in technical innovation based on the science of ecology,*
- *the best of artistry in architectural design,*
- *the best of the heritage and culture of the people who use our buildings.*

From the outset, Hamzah & Yeang sought to apply the technologies and systems found in the most innovative sectors in the world, such as in the domains of science and engineering, with the goal of creating the most advanced ecological architecture with signature aesthetically fulfilling designs, without compromise, without gadgets.

*A journal on green architecture,
design ideas, discovery and innovation*

Letter from the Editor

Welcome to issue No. 9 of our design magazine "Game Changer". We present here our favorite projects, that are completed, or under construction, or in advanced design stages.

These illustrate the wide diversity of our signature ecological design and its unique innovative features. These contain game changing ideas that you can use.

Included are also statements of support from others about our work.

Do enjoy reviewing this magazine!

Editor:

Winnie Soo Wei Yi

[e] weiyi.soo@trhamzahyeang.com



T. R. Hamzah & Yeang Sdn. Bhd.
8, Jalan 1, Taman Sri Ukay,
68000 Ampang, Selangor



PYLON DESIGN

TNB PYLON

PENANG

what others say about us?

“ in design = e^2 , PBS documentary, Episode 6

.. wind, rain and sun in the minds of most architects, they are enemies, but what if buildings can utilise and respond to the conditions of the environment? what if the urban environment itself became a living, breathing organism? To Ken Yeang it is..



Brad Pitt



SUASANA PUTRAJAYA

MALAYSIA

What delights users and public?

Unique features:

• Verandahway

Complement the 'songket' glass canopy located at the covered pedestrian arcade with retail spaces at the bottom edges of each block **give weather protection to pedestrians.**



3 **CLIMATE ACTION**

United Nations Sustainable Development Goals

Putrajaya 2C5 is a 14-storey mixed-commercial development in the city of Putrajaya, Malaysia which is completed in 2017.

In reflectance of the city and its Malay cultural identity, the building has two skins, - one a clear glass and the other - fritted in the Malay 'Songket' pattern with 50% opaque coverage providing sun-shading to the interior spaces. This double-skin façade is perforated with vegetative balconies that enhance the local biodiversity and living quality.

• Central Promenade

Active public realm with seating zones, planting areas as temporal event spaces and faces the retail and F&B spaces, and semi-covered seating areas. The **tower blocks provide shadows sun-shading** over the promenade for most parts of the day.



3 **CLIMATE ACTION**

11 **COMMUNITY DEVELOPMENT**

United Nations Sustainable Development Goals

• Balconies with planter boxes

Facade openings are have protruding balconies with landscape planters to be visible from beyond the vertical glass sun-shading, and create random patterns on the overall facade.



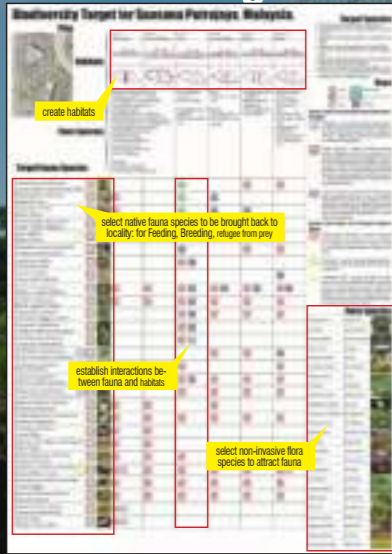
3 **CLIMATE ACTION**

11 **COMMUNITY DEVELOPMENT**

United Nations Sustainable Development Goals

What makes the building sustainable?

• Biodiversity Matrix as basis of creating habitats



3 **CLIMATE ACTION**

13 **CONSUMER RESPONSIBILITY**

15 **LIFE ON LAND**

United Nations Sustainable Development Goals

skycourt

planter box

promenade

What makes it innovative?

• Glass Sun-shading

3 **CLIMATE ACTION**

8 **INDUSTRIAL INNOVATION AND INFRASTRUCTURE**

United Nations Sustainable Development Goals



The sunshade glazing also assist in establishing **comfortable micro-climates in habitable spaces** along the building's exterior.

• Double-Skin Façade

3 **CLIMATE ACTION**

8 **INDUSTRIAL INNOVATION AND INFRASTRUCTURE**

United Nations Sustainable Development Goals



The building's enter facades are faceted to present itself as a **crystalline diamond-like structure**, by the use of angled glass sun-shading that wraps around the building.

• "Eco Cells"

6 **WATER RESPONSIBILITY**

12 **RESILIENT INFRASTRUCTURE AND PLANNING**

United Nations Sustainable Development Goals



The continues vegetation **connects the green area** from Level 1 retail garden down to Basement 2 level, and **channels surface rainwater** into a drain at Basement 2 then will be pumped up back to ground level.

awards received by project

- Bronze Award -Regional Holcim Awards 2011
- Silver Award -Green Building Index (GBI) 2014
- Winner -Cityscape Global Awards 2018/2019
- Winner - Malaysia GBC Best New Green Commercial Building 2020

What makes it innovative?

• Experimental diagonal light shaft

Innovating environmental device is the "Solar Shaft" that cuts through the upper floors of Tower A to allow daylight to penetrate into the deep interior spaces.



3 **CLIMATE ACTION**
11 **INDUSTRIAL AND BUILDING ENERGY EFFICIENCY**
13 **CLEAN ENERGY**

United Nations Sustainable Development Goals



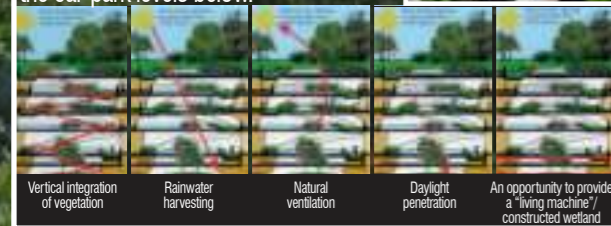
• "Eco Cells"

The "eco cell" is a device that allows for vegetation, daylight, natural ventilation and rainwater harvesting to extend into the car-park levels below.



6 **CLEAN WATER AND SANITATION**
12 **RESILIENT INFRASTRUCTURE AND TRANSPORTATION**

United Nations Sustainable Development Goals



Provision of Ecosystem Services



3 **CLIMATE ACTION**
11 **INDUSTRIAL AND BUILDING ENERGY EFFICIENCY**
12 **RESILIENT INFRASTRUCTURE AND TRANSPORTATION**

United Nations Sustainable Development Goals

UNIQUE FEATURES

The main ecological sustainable significance of the project is its 1.5 km long continuous perimeter landscaped ramp from the basement to roof garden, which demonstrating ecological nexus and connectivity. Furthermore, the vegetation has compensates cleared vegetation for construction on-site, which exceeding site footprint by 80%. These is how Solaris strives to enhance its site's existing ecosystems.

SOLARIS

SINGAPORE

What delights users and public?

• Roof Gardens

United Nations Sustainable Development Goals

Sky terraces at the corner of the building that forms interesting green landscapes and contributes unique social meeting points connected to nature.

• "Vertical Linear Park"

United Nations Sustainable Development Goals

The 1.5 km long continuous green ramp acts as an ecological armature. With each building corner, the spiral ramp expands into generous double-volume sky terraces.

• Operable louvers over Atrium

United Nations Sustainable Development Goals

This innovative device allows wind to cross-ventilate the atrium while keeping out the rain. This device is composed as a series of glazing panels, separated by perforated panels.

Uppermost roof garden

Mid roof garden

Spiral ramp as "Vertical Linear Park"

"Eco Cells"

awards received by project

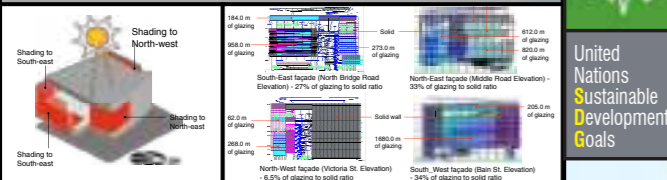
- First Prize - Skyrise Greenery Awards 2009
- Platinum Rating - BCA GreenMark 2009
- Green GOOD DESIGN Award 2010
- Gold Medal - WACA Award 2011
- Gold Award -PAM Awards 2011
- Finalist - RAI International Architecture 2012
- NPark Leaf Certificate Awards 2014
- AIA IR Design Awards 2014, Hong Kong
- FuturARC Green Leadership Award 2015
- FIABCI World Prix d' Excellence Awards 2016

NATIONAL LIBRARY

SINGAPORE

What makes it innovative?

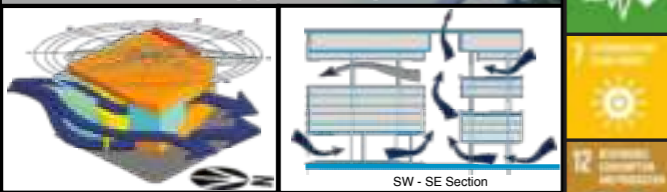
• Sun-shading



United Nations Sustainable Development Goals

Sunshading blades boldly define tropical aesthetics for the building besides providing solar shading and anti-glare performance that in totality gives the image of a contemporary climatic-responsive built form.

• Low energy design



United Nations Sustainable Development Goals

Passive mode strategies used are assembled together as collective strategy for low energy and high comfort building.

Bio-integration of 4 ecology structures

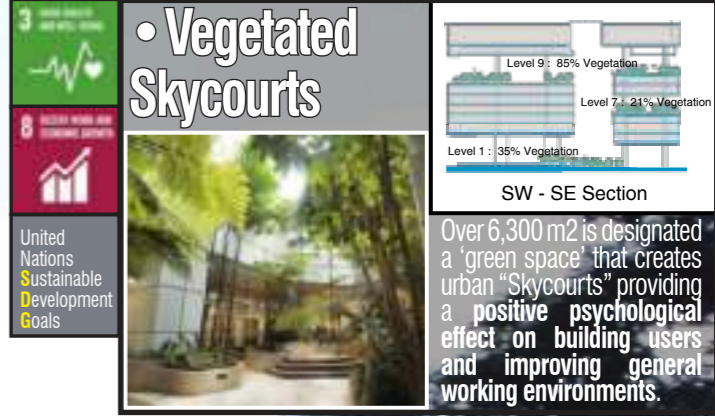


United Nations Sustainable Development Goals

skycourt

What about the interiors?

• Vegetated Skycourts



United Nations Sustainable Development Goals

Over 6,300 m² is designated a 'green space' that creates urban "Skycourts" providing a positive psychological effect on building users and improving general working environments.

• Green material



United Nations Sustainable Development Goals

The use of recycled and reused materials generally (such as carpet, wall fabrics and sustainable-forested local timber) contribute to an environmentally low impact design.

What delights users and public?

• Public Realm



United Nations Sustainable Development Goals

At the heart of the scheme is the Public Events Plaza which is a communal space that becomes main focal point of the site and subsequently leading visitors into main foyer and library proper.

UNIQUE FEATURES

The National Library Board (NLB) building standing along Victoria Street in Singapore today was the outcome of a winning competition scheme that underwent several design revisions before it was accepted by the Client.

The Client wanted a cultural and tropical building to which the Architect responded with an open-to-the-sky naturally-ventilated civic plaza on the ground plane with opportunities for cultural activities and various 'outdoor' events. A rooftop 'bubble' designed to face the waterfront nearby was also popular with people for holding various functions.

awards received by project

- **BCA Green Mark Platinum 2005**
- **Silver Award - 3rd SIA Façade Design Excellence Awards 2006**
- **Shortlisted in sustainability category - RICS Awards 2006**
- **First Prize - ASEAN Energy Efficiency Awards 2007**
- **Silver Award - BCA's Universal Design Awards 2007**
- **BCA Green Mark Platinum 2009**

R-HOUSE

JOHOR

use of evaporative cooling from swimming pool & water feature to lower ambient temperature for the building dwellers

UNIQUE FEATURES

An Australian couple with two young children wanted a 'dream house'. At the outset, Mrs. Reynolds sketched a courtyard house with a central common family space. The architects designed the courtyard as a large playful swimming pool where the living spaces faces it at one side, and the bedroom wing with terraces faces it at the other.



• the "water-court"

A pool courtyard that consists of a tropical pool and the semi-outdoor patio functions as a separator and connector between the public domain and private wing. Apart from the sun deck that can be accessed from the gallery, the in-pool steps are built to serve as entry/ exit points and functions as a sun shelf for sitting and lounging in the pool.



United Nations Sustainable Development Goals



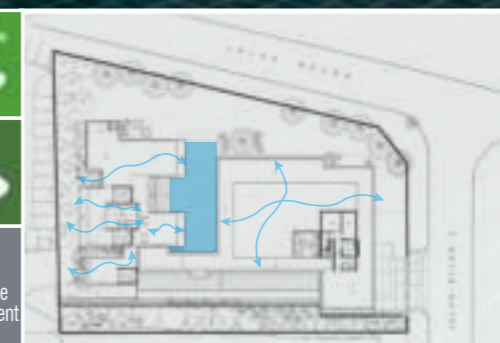
Innovative features

• passive cooling

Comfort cooling is provided via evaporative cooling from the pool and koi pond. The house maximizes cross ventilation by having openings at both sides of the wings at both the ground and first floor levels. The building's shallow floor plan facilitates natural ventilation in all areas, with windows and doors located on opposite walls to encourage cross ventilation.



United Nations Sustainable Development Goals



Passive cooling by good cross ventilation and the use of large water bodies.

EDITT TOWER

SINGAPORE

vegetated ramp



vegetated skycourt

UNIQUE FEATURES

A central multi-use Plaza with a roof canopy which is naturally ventilated and assisted by mixed-mode extraction fans on the roof. The tower is orientated to maximize the view towards the Kuala Lumpur Golf Club and the TTDI forest reserve.

mixed-mode cooling system

bringing natural day light into the retail space

natural ventilated cool plaza

extraction fans

RESIDENTIAL DEVELOPMENT

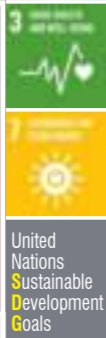
TTDI RESIDENCE

KUALA LUMPUR

What makes it innovative?

• continuous vertical green wall

The façades of the Data Centre incorporate **extensive vertical green walls** that act as **living habitats**. The large greenery components act as means of filtering and improving the building's ambient indoor air quality.



• solar shading

The building is clad with white aluminium panels, clear glass windows, and spandrels with horizontal blades that provides solar shading and anti-glare performance that gives the image of a contemporary climatic responsive built form.



• renewable energy

An array of **photovoltaic panels** is installed on the building's uppermost roof area. The 234 m² PV array generates approximately 35.28kWh of electricity on site with all power generated feeding directly back into the municipal power grid.



What delights users and public?

• spacious internal spaces & daylighting

The main office and circulation spaces are glazed using full-height Low-E curtain walls to provide maximum daylight penetration and enables energy efficient lighting systems within the spaces. Secondary rooms are also fitted with operable windows for natural ventilation and daylight.



UNIQUE FEATURES

The DIGI Technology Operation Centre located in Malaysia's Subang High Tech Park was completed in 2010 and has since been awarded a GBI Gold rating. The Client's brief was to design a data centre with ecological features and is based on the 'IT Data Centre's Uptime Institute' Tier III platform with the possibility of scaling up to Tier IV security. A key feature of the DIGI Centre is a vegetated green wall that wraps around its four façades - meant to act as living habitats and as means of filtering and improving its ambient indoor air quality.

photovoltaic roof canopy

photovoltaic roof canopy

continuous green wall for ecological nexus

naturally ventilated elevated lobby

DATA CENTRE

DIGI TECHNOLOGY OPERATION CENTRE

SELANGOR

GUTHRIE PAVILION

SELANGOR

air-filled roof canopy for HQ building

Innovative features

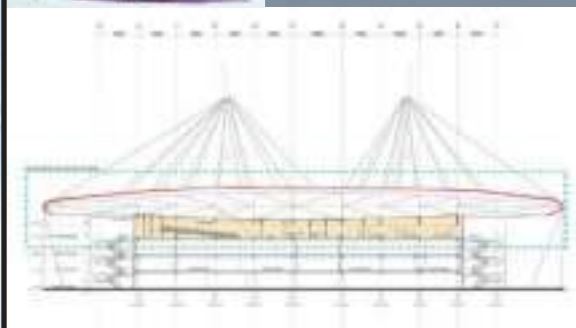
• air-filled roof canopy



The air-filled roof canopy is an independent structure, acting as an "umbrella" over the building. The roof shields the building from the sun, reducing glare and air-conditioning load whilst providing a usable roof terrace overlooking the golf course on the north and east.



United Nations Sustainable Development Goals



air-filled roof canopy

UNIQUE FEATURES

This is a 3-storey building with offices on one wing and a golf clubhouse on the other wing. The building is intended to be a landmark building and to be the most prestigious building visible from the highway as visitors enter the locality. Sunshades are located along the east and west faces of the building to reduce heat gain. The building is fully glazed for maximum views out and natural lighting.

OFFICE BUILDING

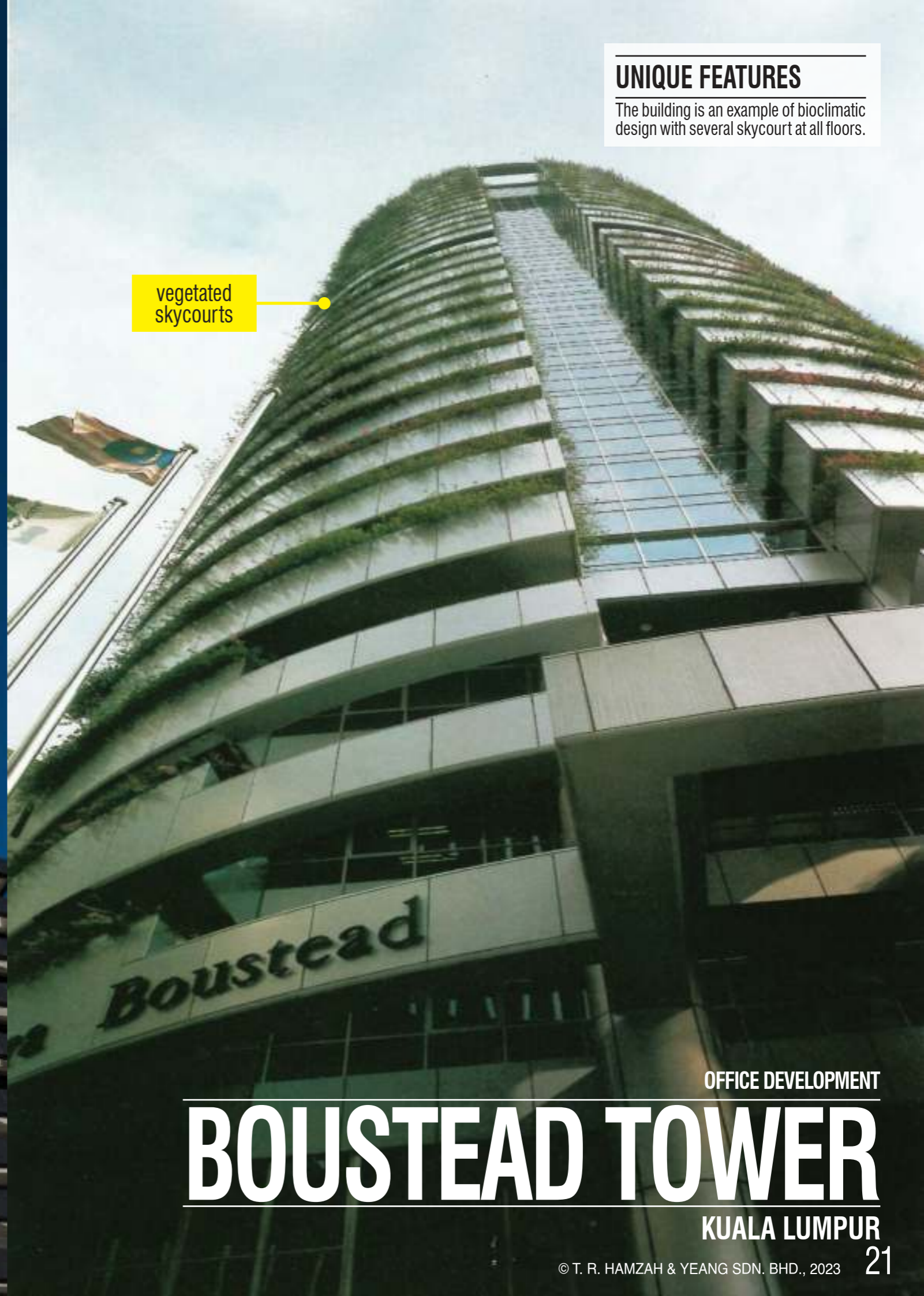
IBM PLAZA

KUALA LUMPUR

continuous stepped planting



vegetated
skycourts



UNIQUE FEATURES

The building is an example of bioclimatic design with several sky court at all floors.

OFFICE DEVELOPMENT

BOUSTEAD TOWER

KUALA LUMPUR

CALVARY CONVENTION CENTRE

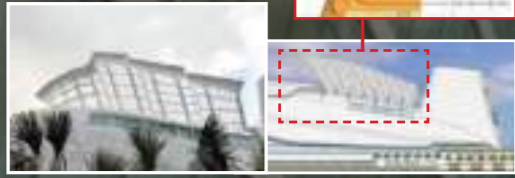
KUALA LUMPUR

rainbow skylight over the semi-enclosed plaza

Innovative features

• operable roof

The **operable 'wings'** powered by hydraulic arms allow daylight and natural ventilation into the auditorium when opened. It can provide natural cross ventilation into the auditorium, as a low energy strategy when the hall is not in full use.



• mixed-mode cooling

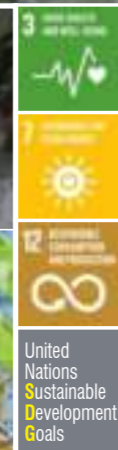
The building uses Mixed Mode cooling in transitional spaces, where natural ventilation is supplemented by mechanical means such as fans, in central transition spaces (lobbies, foyers, courtyard). These spaces include the covered plaza with fan assisted cooling.



Interior design features

• rainbow skylight plaza

The plaza and entrance lobby atrium is a sky-lit space with an array of **rainbow-coloured laminated glass fins** oriented perpendicularly below the skylight so that as the sun moves over the skylight, its motion will generate a "moving rainbow" across the floor of the entrance plaza.



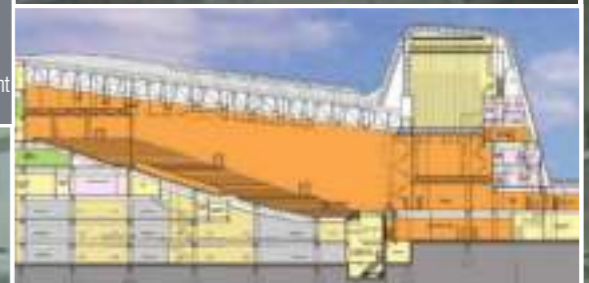
rainbow skylight

skybridge

Users' well-being

• main auditorium

The **5000-seating** auditorium is designed to be sub-dividable into three smaller halls and features a built-in structure in the ceiling for future installation of foldable ceiling-mounted "skyfield" partitions up to 10 metres in height.



UNIQUE FEATURES

The Client is a religious organization seeking a facility for their weekend services, creative performances, training institute and for hosting of events. The brief has 3 main components: the Convention Centre, the Institutional complex and Administration and Commercial Centre. In the competition brief the following were to be incorporated:

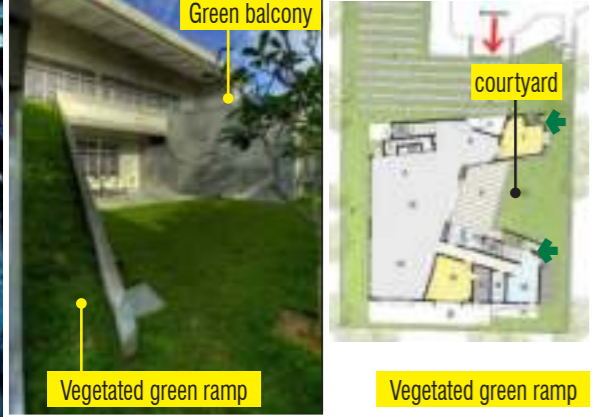
- A rainbow
- A fountainhead
- An object of spiritual significance to be proposed by the architect.

Innovative features

◦ Wind flue design



• Courtyard & outdoor patio



the gallery cooled by experimental vertical wind flue

continuous vegetation ramp

external terrace

CULTURAL PROJECT

GANENDRA ART HOUSE

SELANGOR

UNIQUE FEATURES

The Ganendra Art House is a space for the local Malaysian art and artist community located in the quiet suburban corner of Petaling Jaya in Malaysia. Besides being an art exhibition space, it is also used for lectures, forums and social art-related events. The Client wanted at the outset an experimental structure whose features become themselves topics of conversation for visitors while viewing the art pieces. Aesthetically, the house's façade after its first coat of paint is left unfinished and exposed to the elements to slowly become a magnificent piece of sculpture, revealing the passage of time in its gradually sullied skin and its growing fine veil of greening. The building is a prototype for 'down-draft passive cooling' and a trend setter in its innovative experimental 'wind chimney' never before tested in Malaysia.

ROOF-ROOF HOUSE

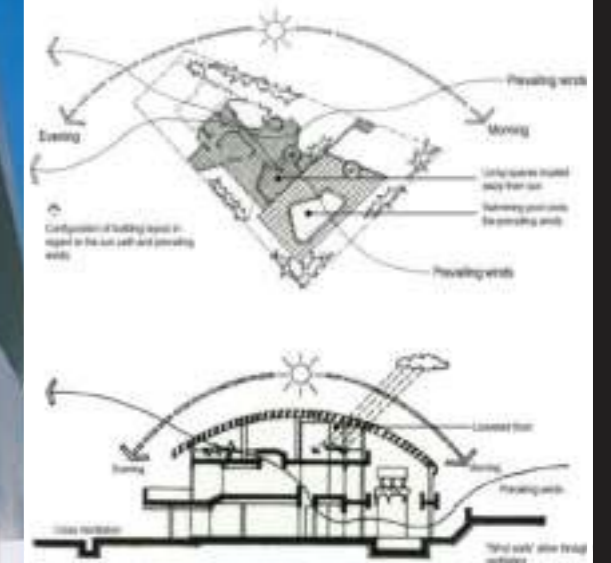
KUALA LUMPUR

the tropical house with louvered canopy

Users' well-being

• built-form orientation

The design is a systemic effort to use climatic factors to opportunistically to shape the building's enclosure, its configuration and spatial organisation. For instance, its north-south orientation protects the major spaces from the tropical sun. The ground floor living-spaces face the East and the spaces open out to the pool-side which takes advantage of the prevailing SE to NW wind to modify the micro-climate.



• four "moveable-layers" of parts

A system of sliding grilles, glass-panels, solid panels and adjustable blinds which are the working components of the valve analogy. Their adjustments by the building's users permits levels of environmental articulation such as for privacy, ventilation, natural lighting, space-usage, security and comfort.



• Interior

Modernist elements and aesthetics; curved stairs and white painted wall

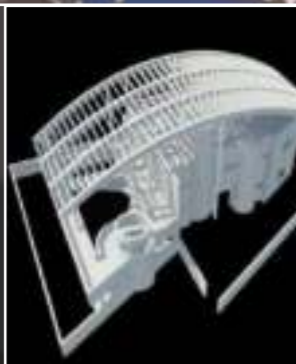


Innovative features

• Large 'baffle' roof



This secondary roof shades the roof-terrace immediately underneath the pool enhancing the cooling breezes into the lower floors. The sectional design of the 'baffle' roof is angled or shaped over the building to reduce the insolation over the west and noon-day sun while letting in the morning sun.



3
United Nations Sustainable Development Goals

• Evaporative cooling device

Swimming pool as evaporative cooling device



3
United Nations Sustainable Development Goals

UNIQUE FEATURES

The design is a systemic effort to use climatic factors opportunistically to shape the building's enclosure, its configuration and spatial organisation to protect the major spaces from the tropical sun. The prevailing wind is cooled as it traverses over the pool water before entering the living spaces whereupon four "moveable-layers" of parts (i.e. sliding grilles and glass panels, solid panels and adjustable blinds) are provided to control the micro-climate of the living spaces. The planning of the internal spaces follow a radial configuration along an East-West axis and in this way integrates the spaces between the building and the site boundary walls as mini-courtyards.

awards received by project

- Merit Award, Kenneth F. Brown Asia Pacific Culture and Architecture Design Award (Hawaii, USA) 1996

MIX-USED DEVELOPMENT

C-RETAIL

CHENGDU



full height
glass facade

roof garden

OFFICE BUILDING

PLAZA VADS

KUALA LUMPUR

UNIQUE FEATURES

Plaza VADS formerly IBM Plaza which ascend a PAM award is a 24-storey Office Tower completed in 1985 with a diagonal vertical planter that climbs on one side of the building to the 14th floor where a landscaped void deck occurs.

The design concept for the New Annex Block takes its reference from the existing tower and translates the concept and the sustainable features into the next decade.



stepped
planting

LA REUNION MASTERPLAN

FRANCE

nature augmented urban areas
to provide ecosystem services



ecological
corridor

urban
finger

ecological
finger

central
plaza

Main
road

Innovative features

close weaving of nature into the urban environment to augment the provision of ecosystem services to urban areas.



green
corridors
(nature)

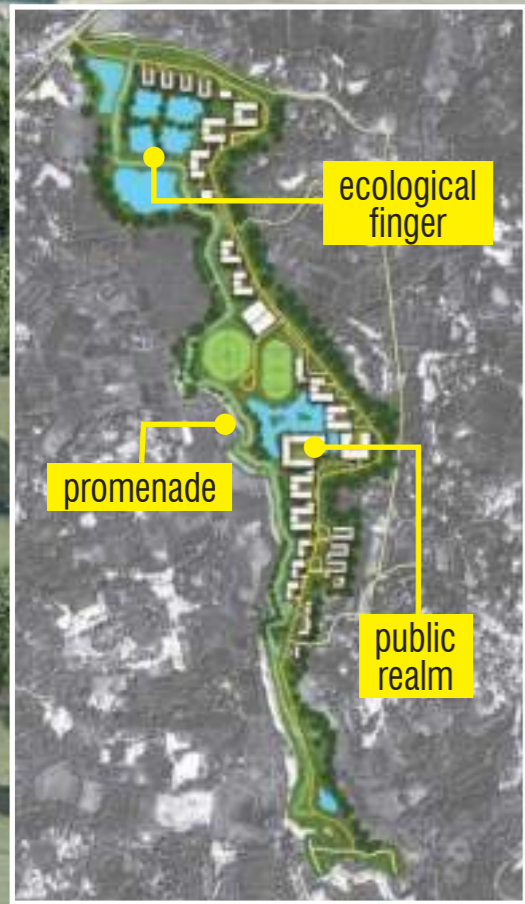
green
finger

urban
finger

main
road



designing for provision of ecosystem services



existing pond

roof garden

public realm

elevated walkway

MASTERPLAN CONCEPT DESIGN

NITTE UNIVERSITY MASTERPLAN

INDIA

UNIVERSITY MALAYA MASTERPLAN

KUALA LUMPUR

fritted glass canopy over university hub

elevated walkway

university hub

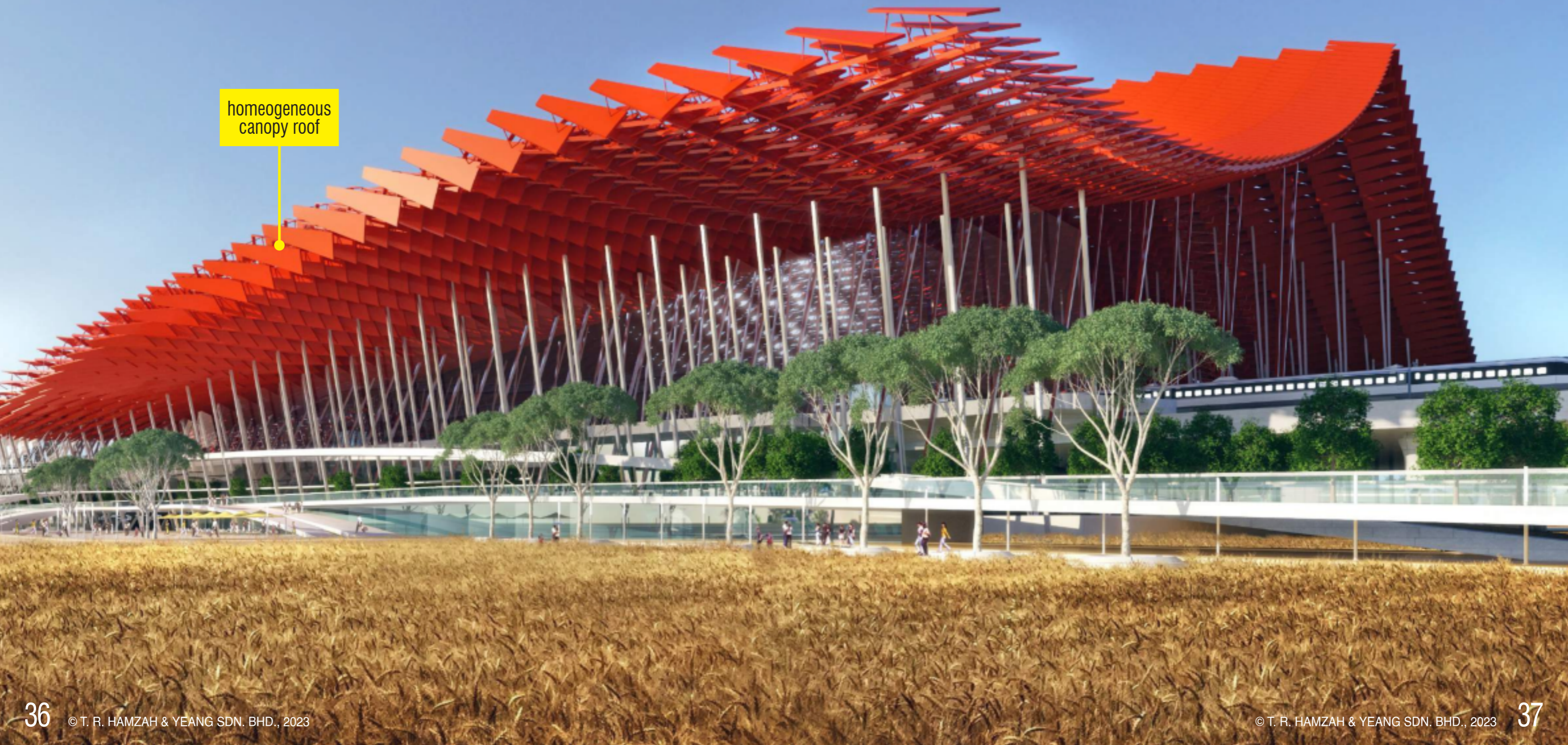
fritted glass canopy

WINNING ENTRY

XIONG'AN STATION

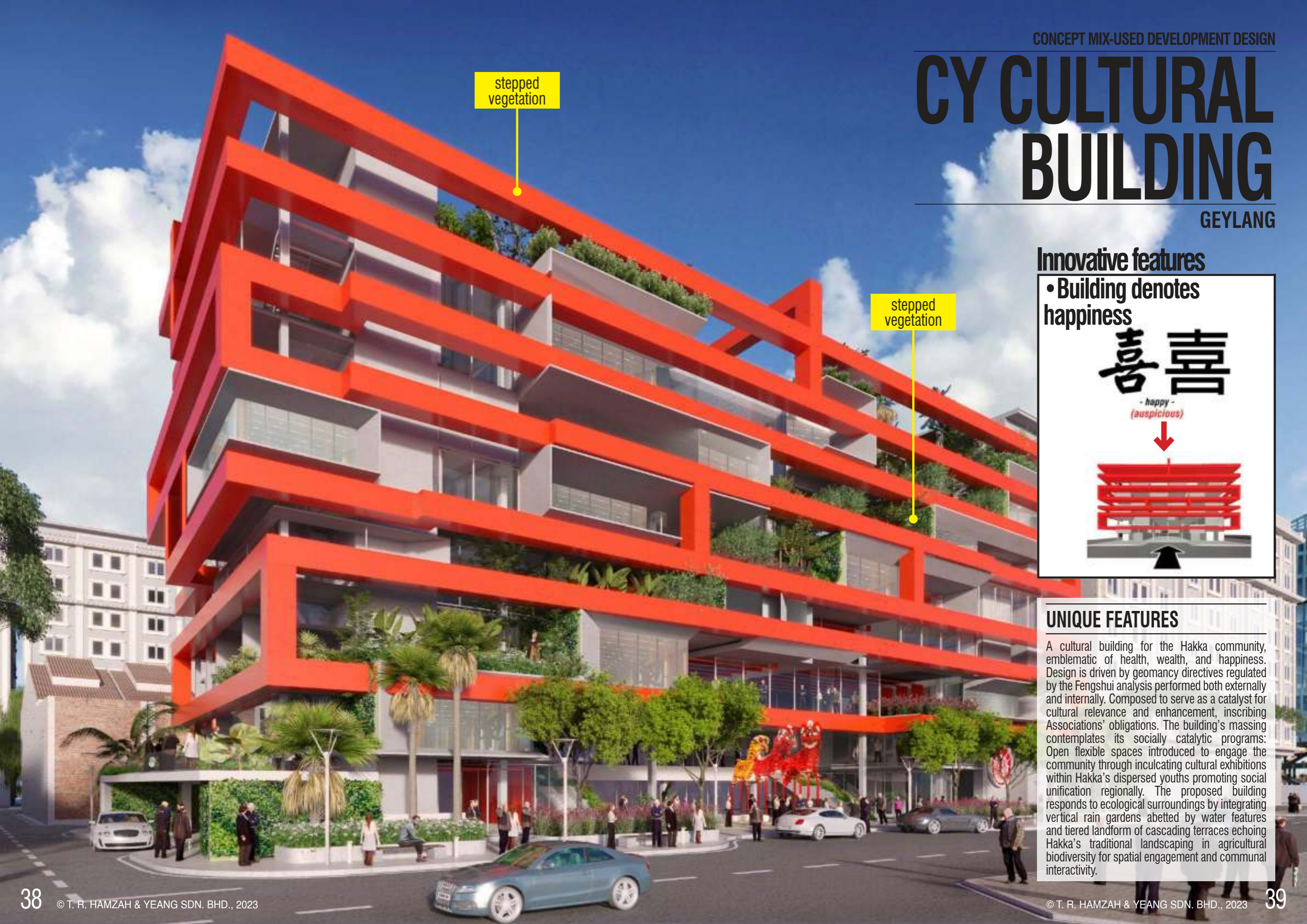
BEIJING

homeogeneous canopy roof



CY CULTURAL BUILDING

GEYLANG



stepped
vegetation

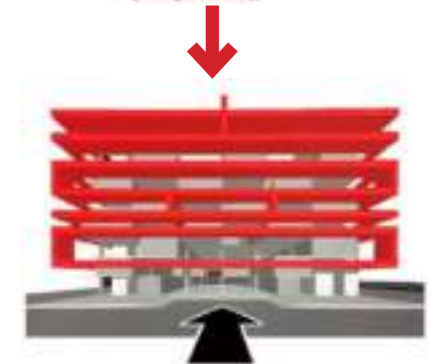
stepped
vegetation

Innovative features

- Building denotes happiness

喜喜

- happy -
(auspicious)



UNIQUE FEATURES

A cultural building for the Hakka community, emblematic of health, wealth, and happiness. Design is driven by geomancy directives regulated by the Fengshui analysis performed both externally and internally. Composed to serve as a catalyst for cultural relevance and enhancement, inscribing Associations' obligations. The building's massing contemplates its socially catalytic programs: Open flexible spaces introduced to engage the community through inculcating cultural exhibitions within Hakka's dispersed youths promoting social unification regionally. The proposed building responds to ecological surroundings by integrating vertical rain gardens abetted by water features and tiered landform of cascading terraces echoing Hakka's traditional landscaping in agricultural biodiversity for spatial engagement and communal interactivity.

Users' well-being

• the "flue wall"

Naturally ventilates the lower 3 floors during the mid-seasons (Spring & Autumn) and reduces annual energy consumption.



United Nations Sustainable Development Goals

UNIQUE FEATURES

The Great Ormond Street Hospital is located in London, the building is the first "Excellent" BRE-rated hospital in the UK. A key feature of the hospital extension is the flue wall which is an energy efficient fabric and ventilation system expressed on the façade facing Guilford Street. The design solution establishes a sense of order, ease of use, comfort and inspiration to the campus, providing facilities befitting Great Ormond Street's status as the world's leading tertiary children hospital.

Energy saving mixed-mode using flue wall

• featured building

Great Ormond Street Hospital is featured in a poster at the London Underground Station.



United Nations Sustainable Development Goals

HOSPITAL

GREAT ORMOND STREET HOSPITAL

LONDON

upper valve

thermal cooling flue

lower valve:
mixed mode floors
(3 floors)

naturally ventilated canopy
to entrance & guardhouse

UNIQUE FEATURES

The residential tower design is within a compact urban setting that resulted in a high-rise built form with the following design features: the built form and facade that are responsive to the solar path of the locality and orientation with sunshading to the hot sides of the builtform, natural through-ventilation across the internal passageways to the apartment units, appropriate building colour that is responsive to the tropical climate, the use of landscaping and roof gardens over the podium to enhance biodiversity and to improve micro-climate conditions, water walls around the pool area for evaporative cooling.

GUARD HOUSE RENOVATION

IDAMAN RESIDENCE

SELANGOR



sun-shading louver

skycourt

MIXED-USE DEVELOPMENT

P-TOWER 5
SELANGOR

what others say about us?

“**Ken Yeang** has developed a distinctive architectural vocabulary that extends beyond questions of style..”


Lord Norman Foster
(British Architect, Foster & Partners)

THE EDGE
MALAYSIA
(City & Country | 12 December 2022)

“The firm’s ethos is “innovation, hyper-green, signature and people’s happiness-focused design”, which are its signature aesthetics and what make its work compelling..”

 **Archute**

“..a champion of the green design movement, **Yeang** was largely seen as a pioneer who was way ahead of his time..”


(1 November 2022) **RIBA**
Royal Institute of British Architects

“**Ken Yeang** is an architect and ecologist with a wealth of experience in ecological design and planning for over 50 years. He has pioneered the field of biophilic design and his ‘bioclimatic skyscraper’, is a type of high-rise now used in various cities that performs as a passive low-energy building, designed according to the location’s local climate..”

ARCHITECTURAL RECORD

“..probably no individual is more important in the development of ecodesign’s theory and practice than the London and Kuala Lumpur-based architect **Ken Yeang**..”

“**Ken**, how many of these have you built?..
(at conference (UK) sponsored by Infosys)”

“..a few..”


King Charles III


Ken Yeang

The Guardian

“..one of the 50 people who could save the Planet..”

MEWAH OILS HQ

SELANGOR

continuous
vegetation

UNIQUE FEATURES

The main feature of the building is a continuous landscaped internal garden which steps upwards from the ground floor to the roof garden and terrace. Adjoining the landscaped steps are water features, a grand stair, terraces and cafeteria. The thickly vegetated landscaped stair displays a variety of tropical plants while the cascading water feature generates an ambience of water relaxing to both the visitors and users of the building. On the outside the form reflects on the façade the stepped garden.

HELIOS 16

MEXICO CITY

Users' well-being

- Indoor swimming pool



What makes us compelling?

- Aerial view



internal natural ventilated atrium



what we do for you? creating a high-value product for you



Well-designed, refined, elegant and exquisitely beautiful



Design that gives the **highest level of pleasure**



Exclusiveness of product that many others cannot have or enjoy



Product possession by purchasers as **reward of their personal success**



Possession of well-designed exclusive product as **proof of financial standing**



Product possession as by owner's **recognition of status**



Accompanying **privileges and service** created for the designed product



Functional rationale for ownership of designed product

RESIDENTIAL DEVELOPMENT

SKYLON

KUALA LUMPUR

Innovative features

- Vertical green wall connected to skycourts



roof garden

skycourt

vertical green wall

MIXED-USE DEVELOPMENT

CORONATION SQUARE

JOHOR BAHRU

Innovative features

- On site facade installation for mock-up floor



entrance guard house

under construction



RESIDENTIAL DEVELOPMENT

FLORA ROSA RESIDENCES

SELANGOR



NORTH CYBERJAYA

CYBERJAYA



continuous green

louvered canopy

podium roof garden

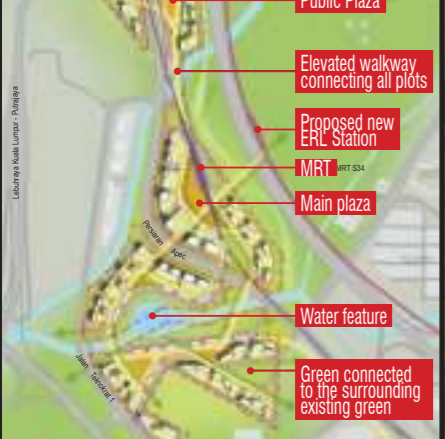
elevated walkway

roof garden

skybridge

public realm

• masterplan





roof garden

skycourt

CONCEPT DESIGN

B-BUILDING

BANGLADESH

LONG HU

CHINA



vertical green

skycourt

roof garden

green wall

green terrace



CONCEPT DESIGN

TRANSPORTATION HUB BANDAR MALAYSIA

KUALA LUMPUR

weaving nature into urban development

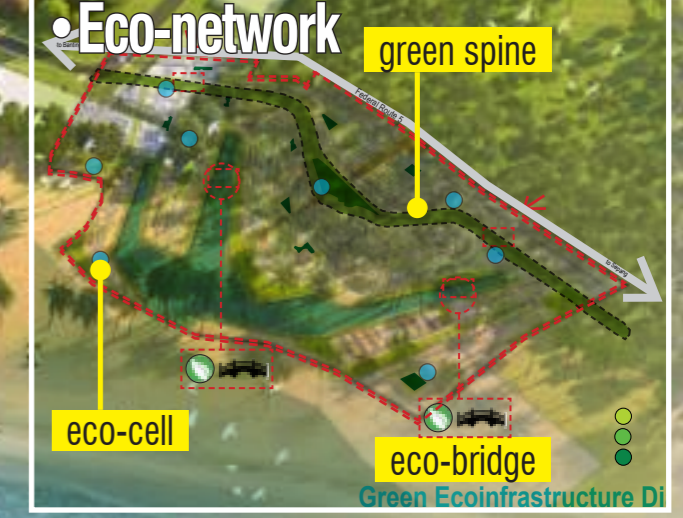
CONCEPT DESIGN

SEPANG WATERFRONT MASTERPLAN

SEPANG



What makes it innovative?



R-UNIVERSITY

JOHOR

continuous green

roof garden

MIXED-USE DEVELOPMENT

O² TOWER

MALAYSIA



MASTERPLAN CONCEPT DESIGN

SOMA MASTERPLAN

BANGALORE

forest
reserve

green
finger

ecobridge

ecological
belt

• masterplan





ecological
belt

RESIDENTIAL DEVELOPMENT

GANGXIA RESIDENCES

SHENZHEN

eco-bridge

OFFICE TOWER

SPIRE EDGE

INDIA

continuous green ecoinfrastructure
at the north façade

continuous
green



MONUMENT DESIGN

NATIONAL MILLENNIUM MONUMENT

PUTRAJAYA



central plaza connected to waterfront

VANCOUVER WATERFRONT MASTERPLAN

CANADA

green roof

central promenade

continuous green

• masterplan



waterfront promenade

WEST KOWLOON WATERFRONT MASTERPLAN

HONG KONG

Pier tower

Roof garden



R-RESIDENCE

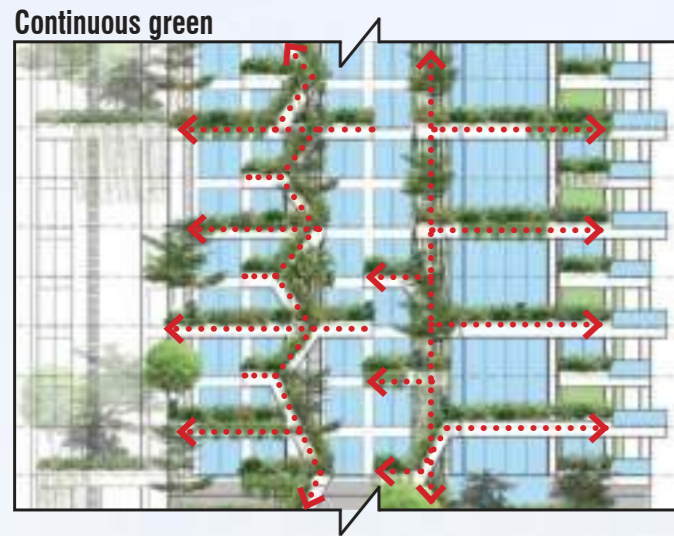
INDIA

vertical forest

Corner jacuzzi at terrace

Trellis connection between the terraces

Green slot at living room



Low density shrubs and vines to avoid obstruction of views from living room

Unit's deck with greenery

Green ramp in front of engineering shafts

Green wall

UNIQUE FEATURES

The objective is to create and build a state-of-the-art super green ecologically-authentic residential development that addresses the Owner's internal, external and strategic issues for the project based on the imagery of a "Vertical Forest" that enhances the lives and health of all those who dwell within the tower and which is expected to effect successful sales for the Owner

what makes us credible?

endorsements by others in our awards..

..over 70 awards in 25 years brought to benefit your projects..

- 2022** Australian Institute of Architect - 2022 Leadership in Sustainability Prize
- 2021** The Edge Malaysia-PAM Green Excellence Award (Honorary Mention)- Putrajaya Suasana (2C5)
- 2021** PAM Gold Medal Award 2020: Commercial (High Rise) Category - Putrajaya Suasana (2C5)
- 2020** Global Forum on Human Settlements (supported by UN Environment Sustainable Development) Planning and Design for Putrajaya Suasana (2C5)
- 2020** Global Forum on Human Settlements (supported by UN Environment Sustainable Development) Outstanding Contribution
- 2020** Malaysia Green Building Council Best Research
- 2018** Malaysia Green Building Council Best Commercial Building Putrajaya Suasana (2C5)
- 2017** Cityscape Award for Putrajaya Suasana 2C5
- 2016** Liang Sicheng Architecture Prize, China
- 2016** FIABCI World Prix d' Excellence Awards: Solaris (Fusionopolis)
- 2016** PAM Award Commendation: Single Residential - R-House
- 2015** 40th Most Famous Architects of the 21st Century
- 2015** The Malaysian Construction Industry Excellence Awards: Prominent Player



Architectural Society of China Liang Sicheng Award 2016 received from Minister of Construction, China

- 2015** BCA-SGBC Green Building Individual Awards: Green Architect Lifetime
- 2014** FuturARC Green Leadership Award: Solaris (Fusionopolis)
- 2014** World Alliance of Sustainable Cities Design: Design Master
- 2014** AIA IR Design Awards, Hong Kong: Solaris, Fusionopolis
- 2014** NPark Leaf Certificate Awards: Solaris, Fusionopolis
- 2013** MGBC Excellence & Leadership in Sustainability Award
- 2013** ARCASIA Award: Honorary Mention, Industrial Building - DIGI
- 2013** Universiti Malaya - Honorary Doctorate in Architecture
- 2012** Green Building Index, Malaysia - Plaza VADS (Annex Block)
- 2012** RAIA International Architecture Award: Finalist - Solaris (Fusionopolis)
- 2012** Green Building Index, Malaysia: Gold - DiGi
- 2012** Council on Tall Buildings and Urban Habitat: Finalist
- 2011** RIBA International Award: Solaris, Fusionopolis
- 2011** Regional Holcim Award for Sustainable Construction: Putrajaya Lot 2C5
- 2011** WACA Gold Medal Award: Solaris (Fusionopolis)
- 2011** LEEDS Platinum status on the pre-certification for Spire Edge, India
- 2011** PAM Gold Medal Award: Solaris (Fusionopolis)
- 2011** PAM Award Commendation: Ganendra Art House
- 2011** Fast Company, March Issue: TOP 10 Most Innovative Architect Firm
- 2010** Green Good Design Awards - Solaris (Fusionopolis)

- 2010** MATRADE Export Excellence Award: Services
- 2009** CNBC Asia Pacific Property Award: Spire Edge, Manesar, India
- 2009** BCA Green Mark Platinum Award: Solaris & Singapore National Library
- 2009** CNBC Asia Pacific Property Award: Best Residential Apartment - TTDI Plaza
- 2008** MATRADE Export Excellence Award: Winning Entry - Solaris (Fusionopolis)
- 2007** ASEAN Energy Efficient Building Awards: 1st prize - 'New & Existing' Buildings
- 2007** BCA Singapore Silver Award: Universal Design
- 2006** Royal Institute of Chartered Surveyors (RICS) Award
- 2006** SIA Facade Design Excellence Silver Award: Singapore National Library
- 2005** BCA Singapore Green Mark Platinum Award: Green and Sustainable Building
- 2005** World Association of Chinese Architects (WACA): Gold Medal Award
- 2001** Hunter Douglas Competition (Open), Malaysia: Winning Entry
- 2000** Beijing World Science & Trade Centre Competition (Invited): Winning Entry
- 2000** Huannan Masterplan Competition for Hopsons Award, China: Winning Entry
- 1996** RAIA International Architecture Award: Menara Mesiniaga
- 1996** Aga Khan Award for Architecture, Switzerland: Menara Mesiniaga

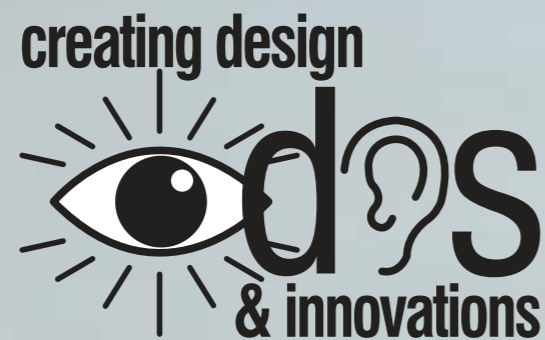


Putrajaya Suasana (2C5) is used as the backdrop for Honda's advertisement for their latest model.



Receiving the Government of Malaysia Merdeka Award for the 'Environment' category (2011) from Prime Minister

GAME CHANGER



Our vision:

“to be architect-of-choice to deliver hypergreen, signature and innovative architecture and masterplans.”

- © T. R. Hamzah & Yeang Sdn. Bhd. (2023)-

Our Offices

© Malaysia (Flagship Office):

T. R. Hamzah & Yeang Sdn. Bhd.

8, Jalan 1, Taman Sri Ukay
68000 Ampang, Selangor, Malaysia
[t] 03-4257 1966/ 1948
[f] 03-4256 1005
[e] trhy@trhamzahyeang.com
[w] www.trhamzahyeang.com

UK:

Ken Yeang Design International Ltd.

4A Avery Row, London, W1K 4AL
[t] 03-4257 1966/ 1948
[e] trhy@trhamzahyeang.com

China:

North Hamzah Yeang Architectural
Engineering Design Co. Ltd.
(8 Branches in China)

Guide International Centre B-10F,
Nanbine Road 27 Beijing, 10055, China
[t] 86 10 6342 7165
[e] board@nhydesign.com
(Contact: Y. Z. Song - CEO)

• Deep Green • Signature • Innovation • Well-being & Happiness •

© T. R. Hamzah & Yeang Sdn. Bhd., 2023